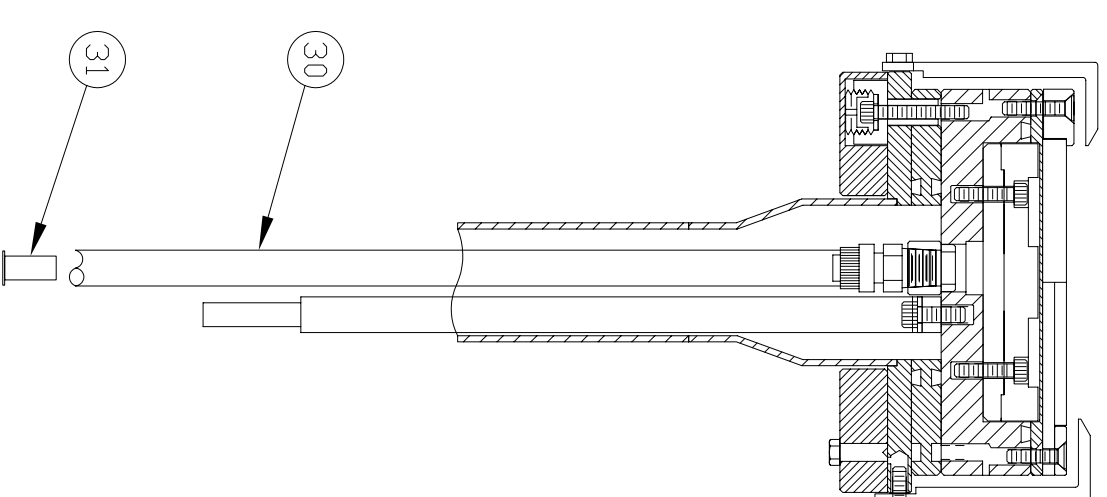
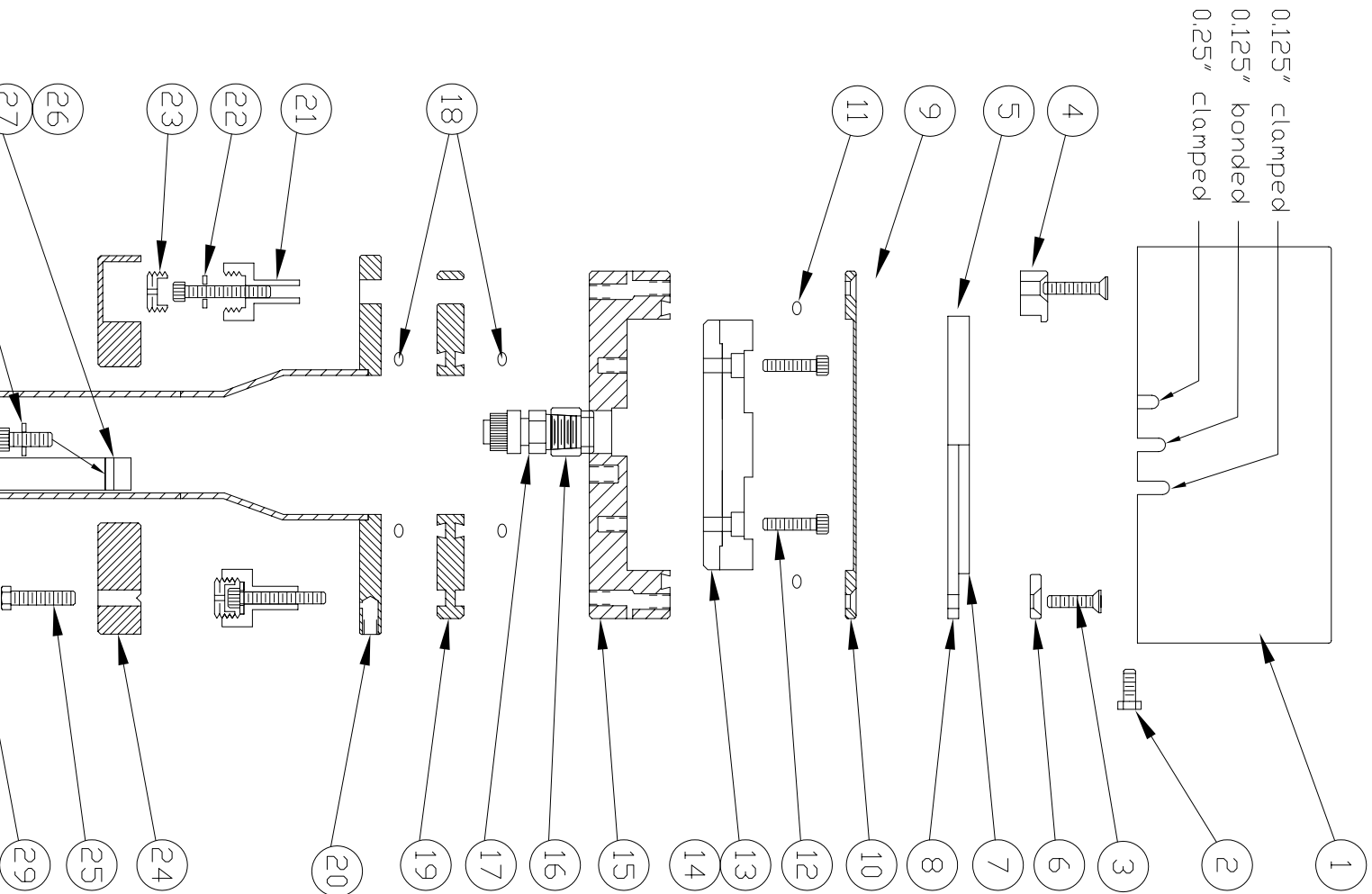


REV	DESCRIPTION	DATE	EDITED BY	APPVD



Item	QTY	Part No.	Description	Material
1	1	7001	Top Shield for 1/4" & 1/8" targets	304 SST
2	3	---	Top Shield Bolt: 6-32 x 3/8", HHMS	SST
3	6	---	Target Clamp Bolt: 6-32 x 3/4", PHMS	SST
4	1	?	Target Clamp, 1/4" Target	304 SST
5	1	---	Target, Ø2" x 1/4" ( Not Supplied )	N/A
6	1	7002	Backing Plate Clamp, 1/8" Target	304 SST
7	1	---	Target, Ø2" x 1/8" ( Not Supplied )	N/A
8	1	??	Backing Plate, 1/8"	C110
9	6	---	Membrane Bolt: 6-32 x 1/2", PHMS	SST
10	1	7003	Cathode Body O-Ring: #2-234	C110
11	1	---	Magnet Bolt: 6-32 x 5/8", SHCS	Viton®
12	2	---	Magnet Cover	SST
13	1	995	Magnet Plate (Standard)	C360
14	1	996	Cathode Body Base	416 SST
15	1	7004	Water Tube Braze Fitting, 1/8" FNPT	C360
16	2	---	Insulator Seal O-Ring: #2-xxx	Viton®
17	2	---	Insulator Seal	Teflon®
18	2	7005	Flange & FeedTHRU, Ø1.25"	304 SST
19	1	7006	Bolt Insulator, Long: #6	GFT®
20	1	451	Insulator Bolt: 6-32 x 1", SHCS, w/washer	SST
21	6	---	Bolt Insulator cap	Teflon®
22	6	---	Insulator Shield Bolt: 8-32 x 3/4" HHMS	6051-T6
23	6	4776	PWR Insulator Shield	SST
24	3	7007	Insulator Connector Body	C110
25	3	---	PWR Cathode Bolt: 8-32 x 1/2", SHCS, w/ split washer	SST
26	1	6957	PWR Rod Insulator	Teflon®
27	1	6961	Cooling Water Tubing, 3/8" OD, x 11 feet	PTFE
28	2	---	PWR Rod	C360
29	1	6962	Cooling Water Tube Inserts 1/4" OD	SST
30	2	---	AMP Connector Bolt: 4-40 x 3/8", SHCS	SST/C110
31	2	---	AMP Connector Solder Assy (Conn: 82-92, Strap: 6963)	6051-T6
32	8	---	PWR Enclosure Assy	C110
33	2	6966	PWR Connection Clamp	SST
34	1	6965	PWR Bolt & FenderWasher: 10-32 x 7/8", HHMS	SST
35	1	6964	PWR Locking Flange Nut: 10-32	SST
36	1	---	Collar Bolt, 1/4-28 x 5/8", SHCS	SST
37	1	93776A401	Collar Attachment Bolt, 10-32 x 7/8", SHCS	6051-T6
38	2	---	Pisco Bulkhead Fitting, 3/8"	Plastic
39	1	6436K143	Enclosure Cover Bolt: 6-32 x 3/8", Pan Head	SST
40	1	---	PWR Enclosure Cover	6051-T6
41	2	PMP3/8		
42	6	---		
43	1	6946		

UNLESS OTHERWISE SPECIFIED

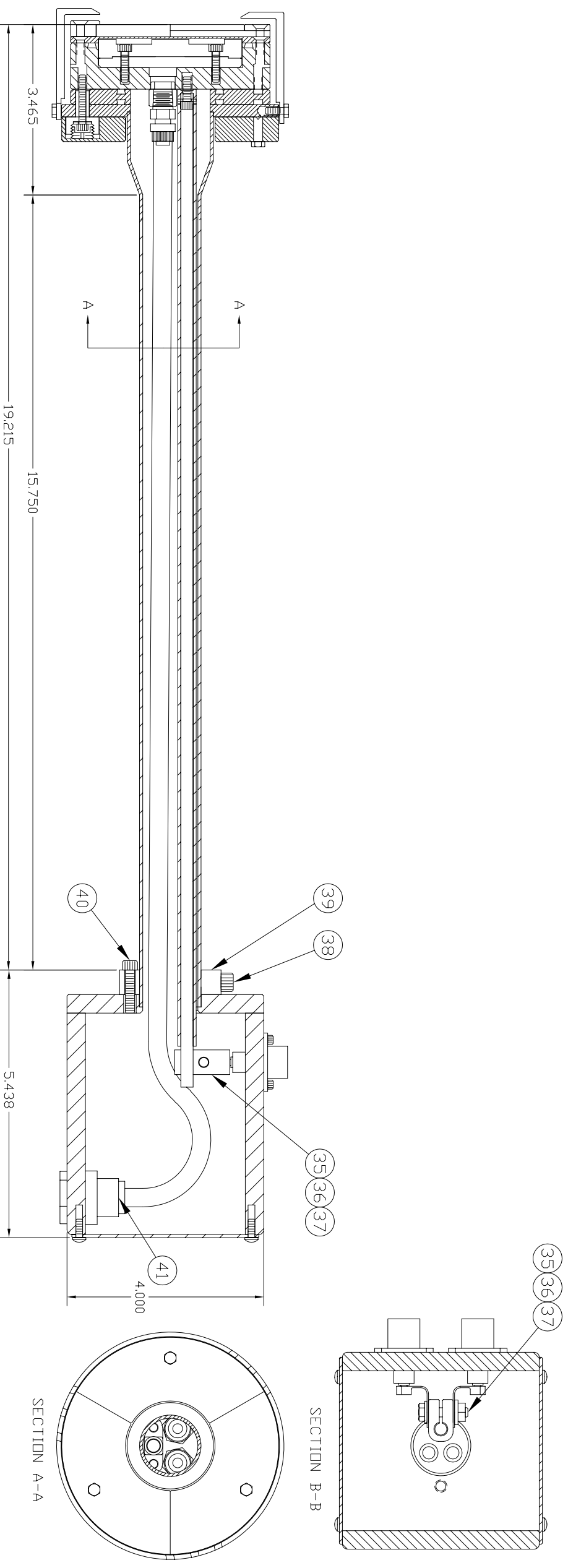
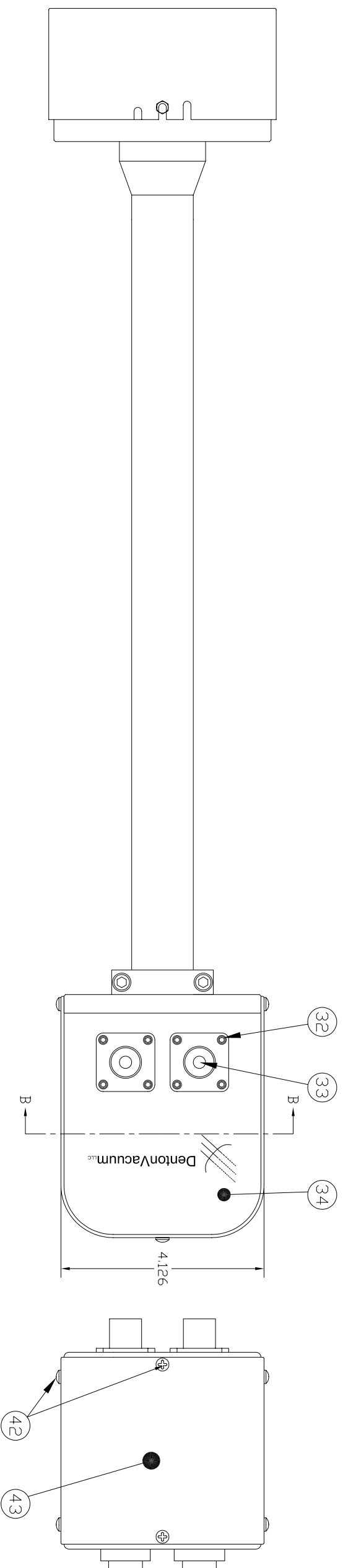
TOLERANCES		MATERIAL	SCALE	DATE	DRAWN BY:	DATE	CHECKED BY:
.X=	± 0.1		NONE	10/28/10	DDM		
.XX=	± 0.01						
.XXX=	± 0.003						
ANGULAR=	± 0.5°						
SURFACE ROUGHNESS:	64 <input checked="" type="checkbox"/>	Sierra Applied Sciences, Inc.		DRAWING NUMBER:	7000		REV:
				TITLE:	Ø3" ROUND INTERNAL		
				DRAWING SIZE:	SHEET: 1 OF 1		

Used On  
DENTON VACCUUM

Not for publication. This drawing is the property of Sierra Applied Sciences, Inc. Its use is conditioned upon the user's agreement not to copy or reproduce the drawing in whole or in part or to use the drawing to reproduce the material described therein or any other purpose without written permission from Sierra Applied Sciences, Inc. These parts may be covered by one or more of the following U.S. Patents, #5,262,028; #5,415,754; #5,303,440; #5,303,449; #5,362,222

CONFIDENTIAL

REVISIONS			
REV	DESCRIPTION	DATE	EDITED BY



Used On		DENTON VACUUM	
CONFIDENTIAL Not for publication. This drawing is the property of Sierra Applied Sciences, Inc. Its use is conditioned upon the user's agreement not to copy or reproduce the drawing in whole or in part or to use the drawing to reproduce the material described therein or any other purpose without written permission from Sierra Applied Sciences, Inc. These parts may be covered by one or more of the following U.S. Patents, #5,262,028; #5,415,754; #5,440,086; #5,449,362.			
UNLESS OTHERWISE SPECIFIED		Sierra Applied Sciences, Inc.	
TOLERANCES		SCALE: NONE	
.X= ± 0.1	DATE: 10/28/10		
.XX= ± 0.01	DRAWN BY: DDM		
.XXX= ± 0.003	CHECKED BY:		
ANGULAR= ± 0.5°	TITLE: 3" ROUND INTERNAL		
SURFACE ROUGHNESS: 64 ✓	DRAWING SIZE:	SHEET: 1 OF 1	DRAWING NUMBER: 7000
			REV: