

SECTION 3 EQUIPMENT SPECIFICATION

3.1 *PDS-2010*

Dimensions (Nominal)	Width 19.5 in (49.5cm) Height 50.5 in (128.3cm) Depth 23.75 in (60.4cm)
Operating Environment	An ambient temp or 60–80°F is desired. Temperatures above 90°F will decrease coating efficiency and may cause electric equipment to shut down. Relative Humidity should be kept between 5%–95%.
Weight	170 lb. (77 kg)
Chamber Size	12 inch dia. X 12 inch high (8.5"/31.5cm Dia. X 11.19"/28.4cm H, useable size) with other chamber designs available
Power	110/220 VAC, single phase, 50-60 Hz, 20/12 A (Specified at time of purchase)
Dimer Capacity	125 grams
Vacuum Pump	8.5 CFM, two-stage, direct drive
Exhaust	Approx. 8.5 CFM @ 0.1 Inch Water (14.5 M ³ /H)
Cold Trap	Optional Mechanical Chiller, LN ₂ (connect with 3/8" O.D. tube), or Manual Fill Probe
Controls	Computerized sequencing using microprocessor temperature and process controllers. Automatic and semi-automatic operation with fault condition and end-of-run monitoring for controlled shutdown sequence.

3.2 *TUMBLER OPTION*

Dimensions	Attaches to Optional Chamber with Removable Lid. No additional floor space required
Weight	12 lb. (5.4 kg)
Canister Size	6 inch dia. x 6 inch long.
Power	0–130 VDC, 0.3A (Supplied by Labcoter™)
Load Capacity	68 Cubic Inches (1.1L) [At 40% fill]
Controls	Controlled from Labcoter™

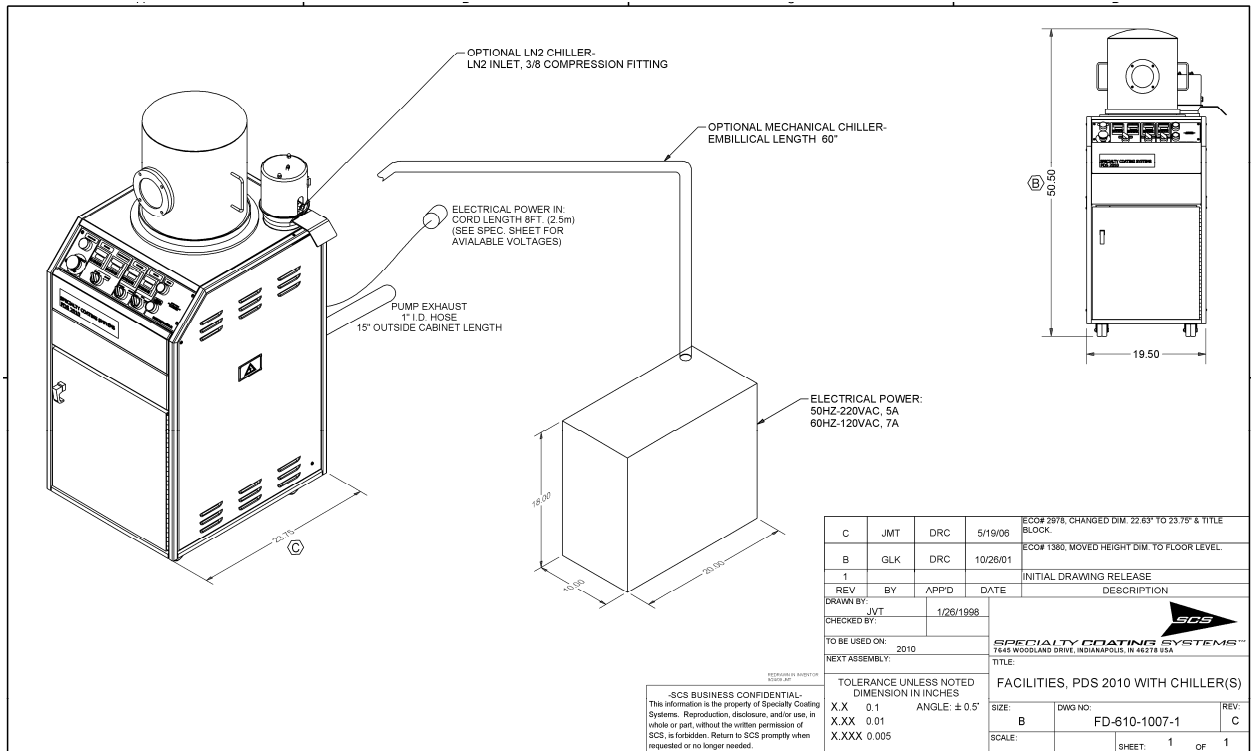


Figure 1: Facilities Drawing

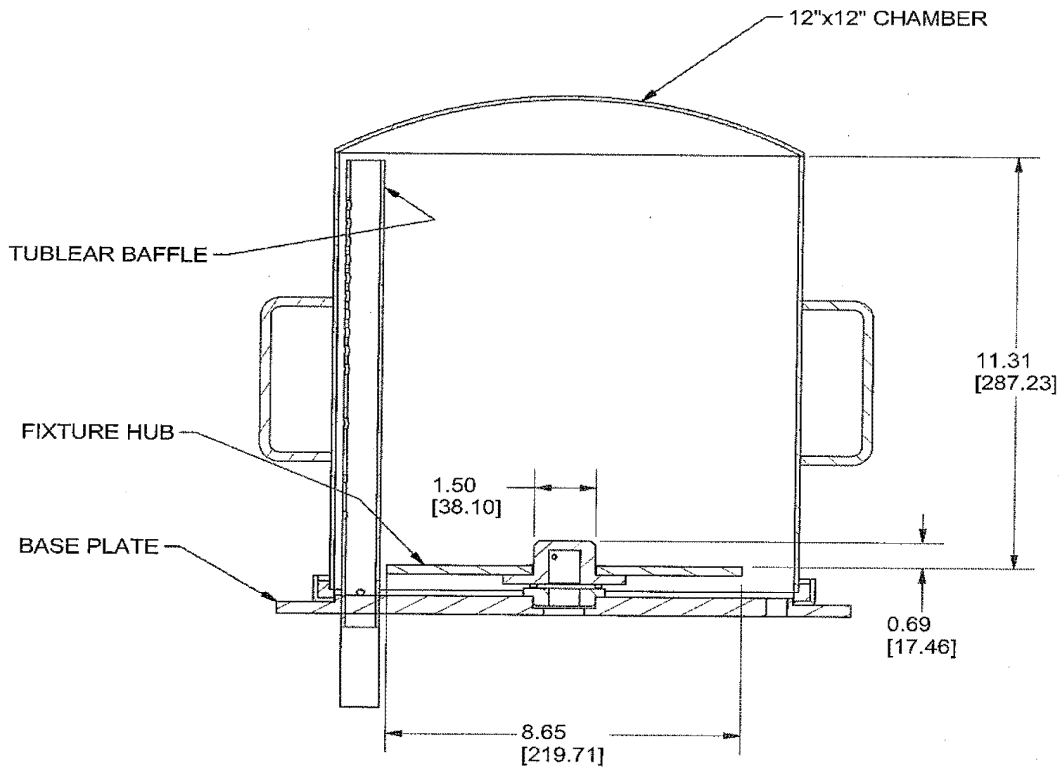


Figure 2: Useable Chamber Size